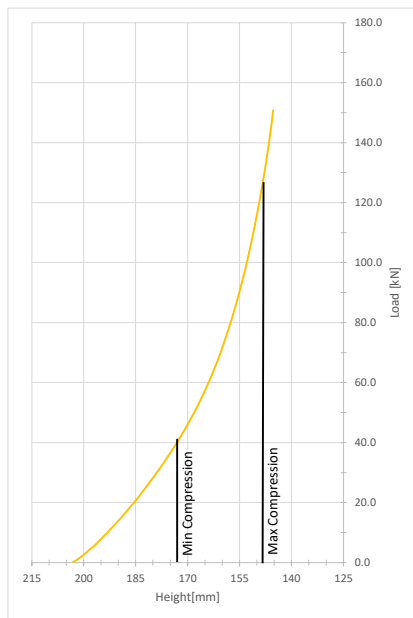
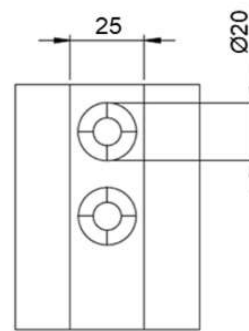
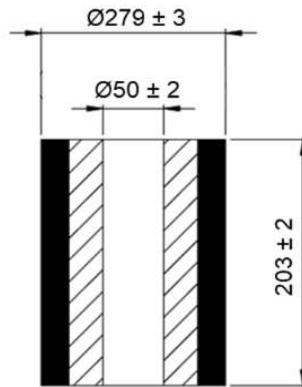


Continental SAM

DN 279 DH 203 IN 50



Compression [%]	15	20	22.5	25	27.5
Load [kN]	39.8	62.0	77.6	98.4	127.0
Height [mm]	173	163	158	153	148
Spring Rate [kN/m]	1860	2758	3605	4852	6994
Effective Deflection [mm]	21	22	22	20	18
Natural Frequency [Hz]	3.4	3.3	3.4	3.5	3.7
Maximum OD [mm]	303	313	318	323	329
Weight [Kg]	12.15				



Continental SAM is the solution for spring replacement and vibration isolation.
With its resistant, durable and economical design it helps to cut costs in nearly all industrial applications.

- › better working conditions due to a dramatically reduced noise level
- › reduced downtimes
- › compact design
- › high load-bearing capacity
- › reliable even in damp or corrosive conditions
- › maintenance-free
- › safe due to the absence of moving parts
- › reliable even in extreme temperatures (-40°F to 167°F, -40°C to +75°C)